



CoolLED pE-300 White



CoolLED pE-300 White

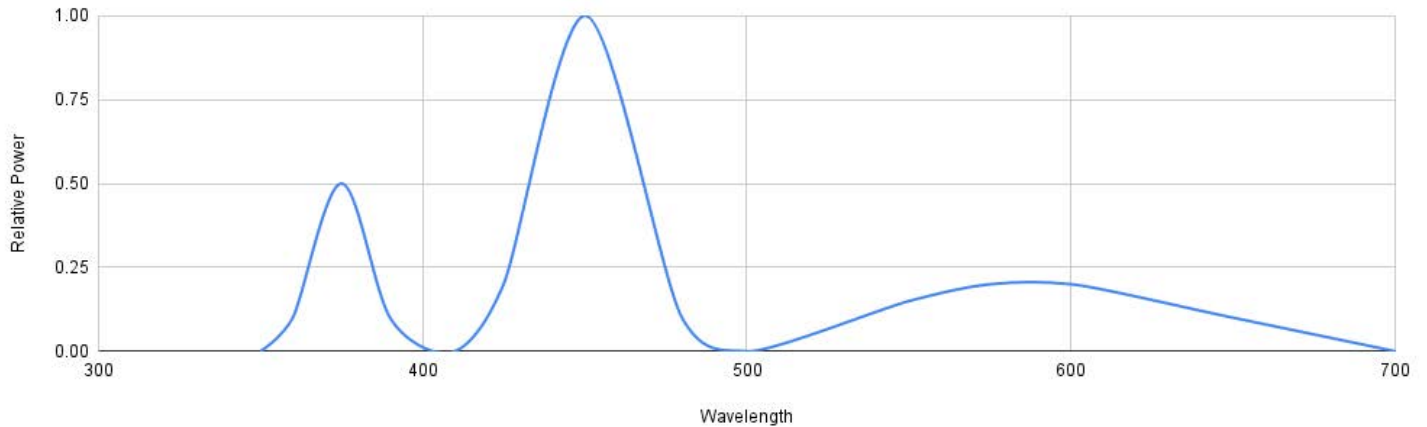
Broad spectrum, **multi-LED fluorescence illumination** source. Supports simultaneous or individual **Calcein and Alizarin Red** fluorescence labeling for dynamic histomorphometry. Label **intensity independently adjustable**.

LED Fluorescence Light Source

~25,000 hour life, 10+ years of continuous use. Mercury free. **Software and manual control**. **Direct microscope mount** or remote attachment via 3mm **liquid light guide**.

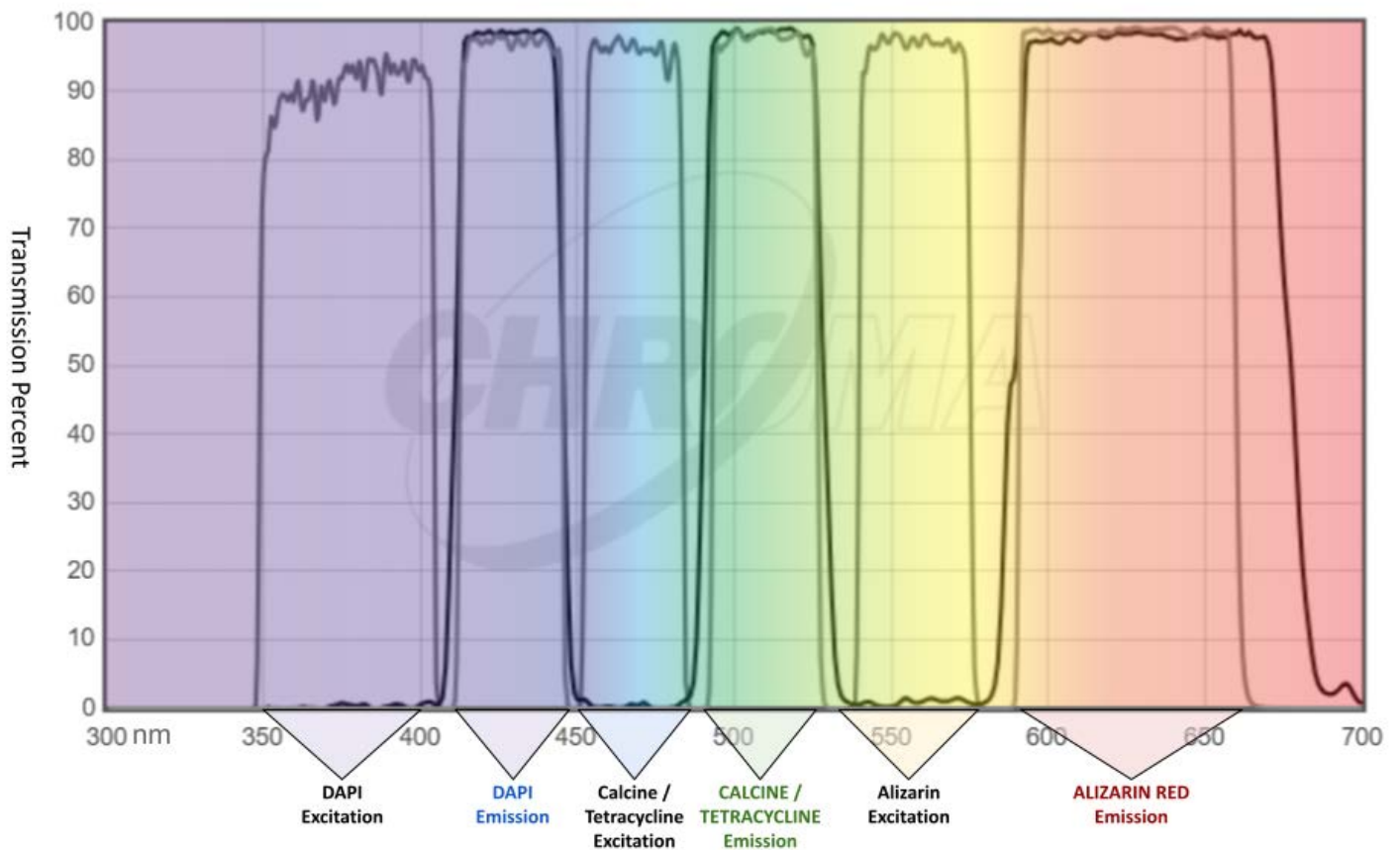
CoolLED Excitation Power by Wavelength

Relative Power vs. Wavelength



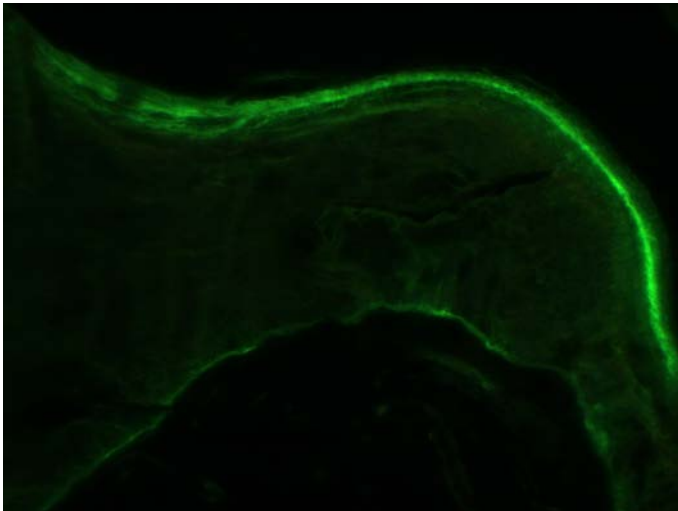
Standard Fluorescence Filter Cube Chroma 69401

The pE-300 is normally matched to a Chroma 69401 triple-band filter cube. This eliminates the need to switch cubes to view different labels. Labels can be excited individually or simultaneously. Compatible with DAPI, Calceine / FTIC / Alexa 488, Alizarin Red / Texas Red / Alexa 594. Cube sold separately.

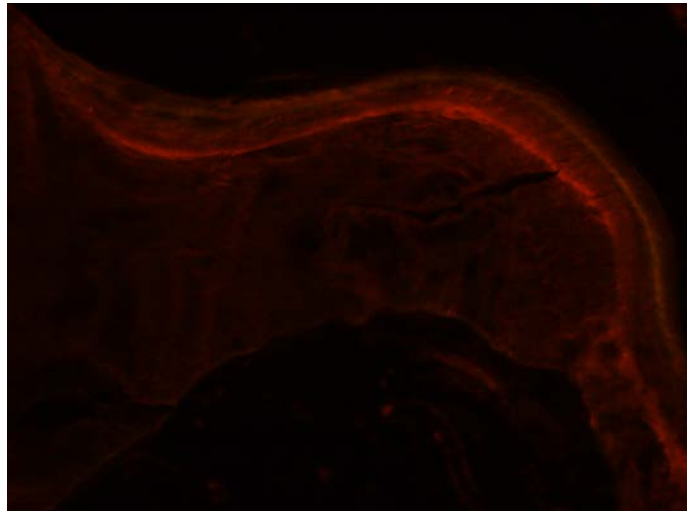


The strength of each of the excitation wavelengths (375nm / 475nm / 575nm) is independently controllable.

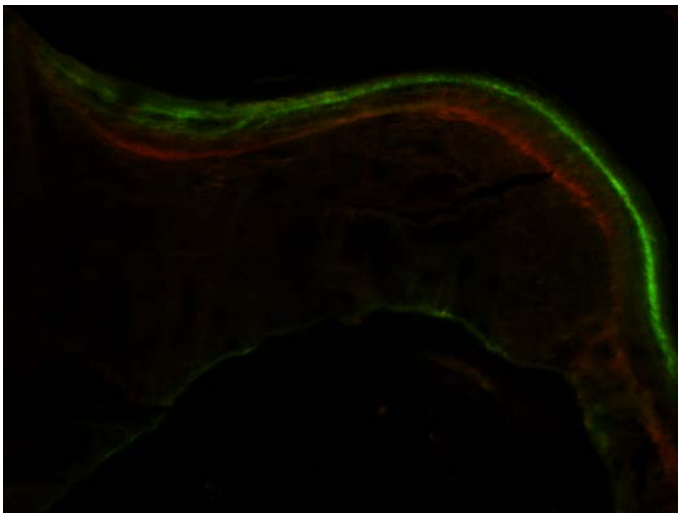
Representative Images of Calcein and Alizarin Label Balancing



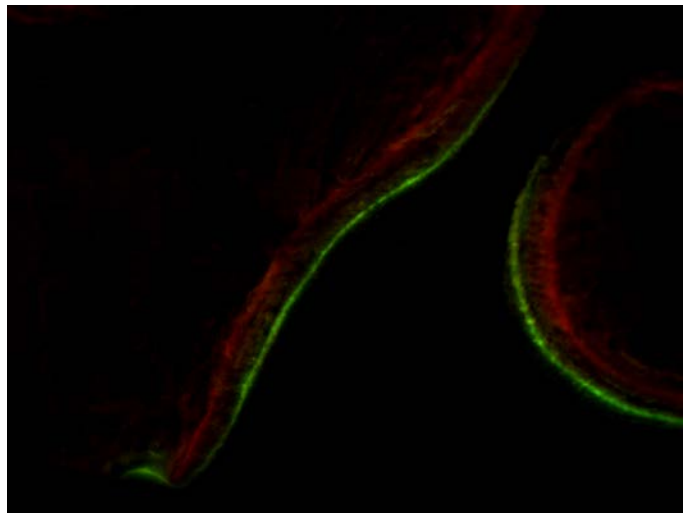
Calcein Label Excitation Only



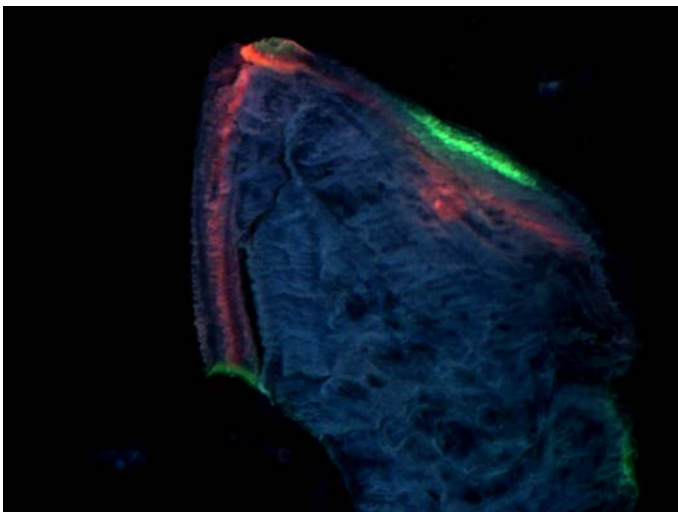
Alizarin Label Excitation Only



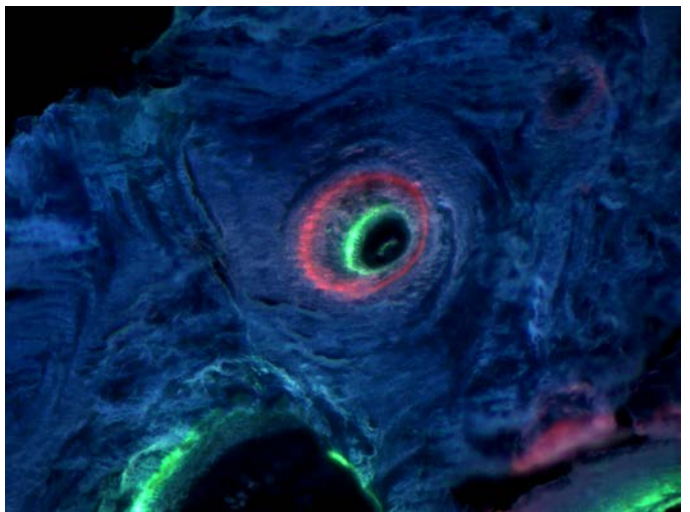
Simultaneous Excitation Calcein and Alizarin



Simultaneous Excitation Calcein and Alizarin



Calcein, Alizarin, Blue Bone Surface Autofluorescence



Calcein, Alizarin, Blue Bone Surface Autofluorescence

Technical Specifications

Identification	
Model Number	pE-300-W-D-SB-201-40
Illumination Wavelength Specifications	
First Excitation Wavelength	375 nm center / 50 nm wide
Second Excitation Wavelength	475 nm center / 50 nm wide
Third Excitation Wavelength	575 nm center / 50 nm wide
Intensity Adjustment, Per Channel	1% to 100% independent adjustment per channel
Illumination Life Cycle and Safety Specifications	
Warm-up Time	Instantaneous
LED Illumination Lifetime	~ 25,000 hours (10+ years continuous use)
Manual Illumination Control	Pushbutton Control Pod - On/Off - Intensity Adjust
Environmental & Safety	Mercury-Free / Laser-Free
Energy Efficiency	~80% Less Energy than Non-LED Systems
Data and Power Specifications	
Remote PC Control	USB / Virtual RS232
Power Supply	100-240VAC, 50.60Hz, 1.4A
Minimum / Maximum Power Draw	2 W / (Standby) 46 W (Maximum Intensity)
Physical Specifications	
Direct Mount	Interface Varies by Microscope
Remote Mount	3mm Liquid Light Guide
Dimensions	88mm x 125mm x 37mm
Mass	320g
Warranty	
Warranty Term	36 Months